



PHOTOGRAPHIC RECORD OF THE SETTLEMENTS ALONG THIMPHU-PARO HIGHWAY
(EXTRACT FROM THE COMPLIANCE AND DEVELOPMENT REVIEW OF THE SETTLEMENTS ALONG THIMPHU-PARO HIGHWAY)
(DEPARTMENT OF HUMAN SETTLEMENT, MOWHS)

1. NGABI RONG CHU, CHUBGANGKHA, DEPSITSHU, & JAZAM - THIMPHU

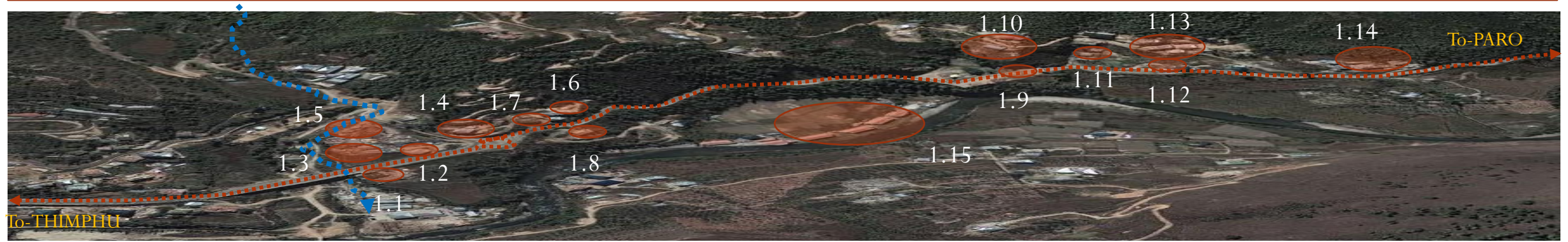
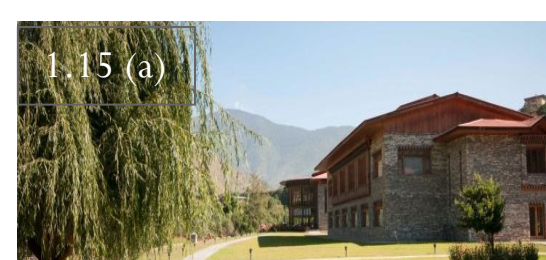
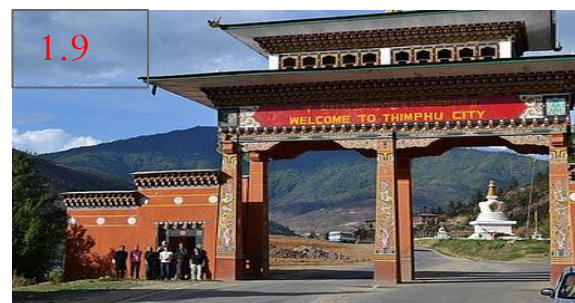
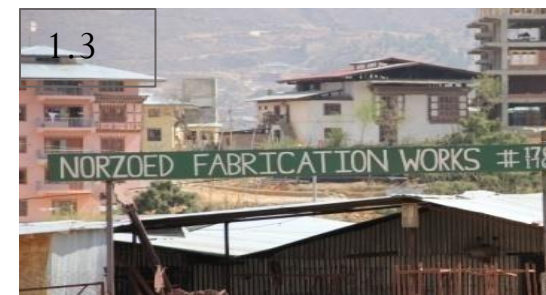


Fig. 1.1: RCC building with single storied wooden extension in the front, Fig.1.2: RCC building with cantilevered attic, Fig.1.3: Industrial workshops, Fig.1.4: RCC building above the saw mill, Fig. 1.5: Saw mill, Fig. 1.6, 1.7 : Groups of RCC houses built and one under construction above the road in Depsi tshu area, Fig. 1.8: RCC building with wooden extension below the road, Fig. 1.9: Thimphu Gate, Fig. 1.10: G4S office, Fig. 1.11: Temporary single storied wooden and stone houses , Fig. 1.12: Newly built RCC duplex, Fig. 1.13: Resort built from RCC above the road, Fig. 1.14: Groups of RCC buildings(residences) and Fig. 1.15 (a) & (b): Terma Linca resort.



2. RAMTOKTO, NAMSELING AND DRAMISA, THIMPHU

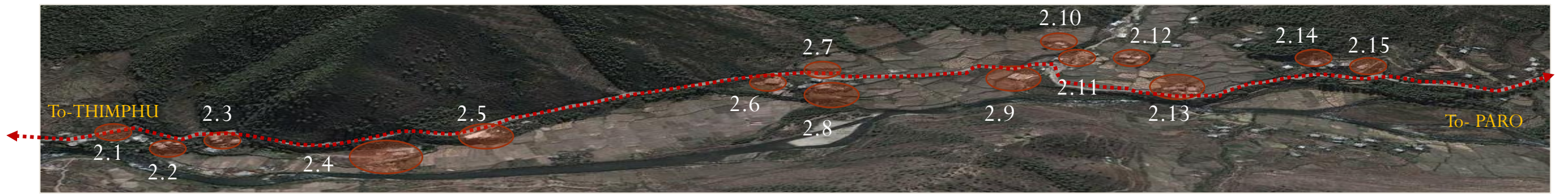


Fig. 2.1: Traditional building and a single storied wood house, Fig.2.2: 3-4 RCC buildings along the saw mill way, Fig.2.3: RCC building with extended kitchen , Fig.2.4: Saw mill, Fig. 2.5, 2.6,2.7: Newly constructed RCC buildings , Fig. 2.8: Traditional village, Fig. 2.9: single storied stone house and RCC workshop below the highway, Fig. 2.10, 2.11: New RCC buildings above the highway, Fig. 2.12: Old 'Beodgho rabsey' house, Fig. 2.13: Dramisa village, Fig. 2.14: New RCC duplex and Fig. 2.15: RCC duplex with exposed brick work.



3. NYEZEKHA, SIGYEL AND KHASADAPCHU, THIMPHU

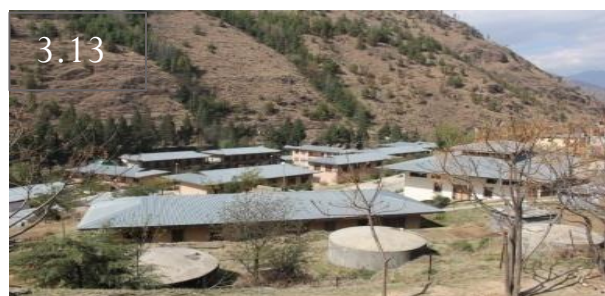
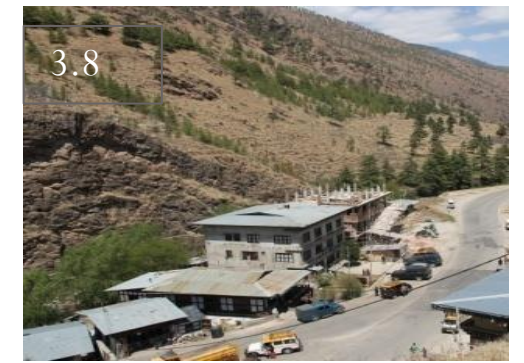
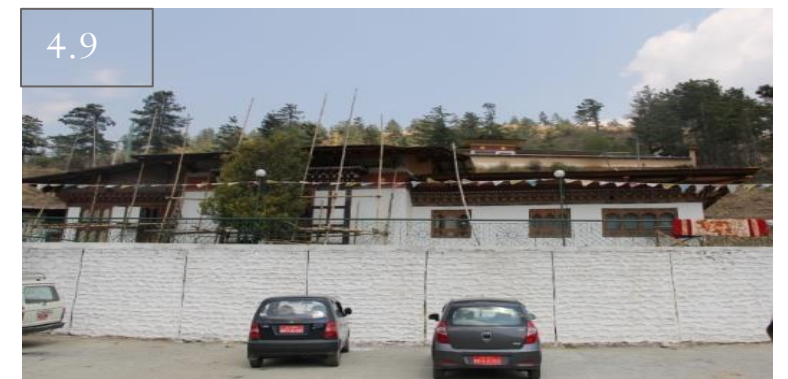


Fig 3.1: Rammed earth structures, Fig.3.2: Nyezekha village above the road, Fig. 3.3: RCC structure below the road, Fig. 3.4: Single storied structures catering to staffs and office of the livestock division, MoAF, Fig. 3.5,3.6: Newly constructed RCC buildings (G+2+attic), Fig. 3.7: RCC building with single storied extensions and open terraces, Fig. 3.8: Areal view of the Khasadapchu town, Fig. 3.9 and 3.10: Saw mill, Fig. 3.11: New building under construction, Fig. 3.12: traditional building with labour rabsey, Fig. 3.13 : Khasadapchu school and Fig. 3.14: BPC office above the road.

4. LANGDRU AND WANGSISINA, THIMPHU



Fig.4.1: Newly constructed rammed earth building with singled storied building coming up in the proximity, Fig. 4.2: An old traditional house above the road (still inhabited), Fig. 4.3: Traditional house below the highway, Fig. 4.4: Single storied houses inhabited by Tibetan refugees, Fig. 4.5,4.6: traditional 2 storied house, Fig. 4.7: Wangsisina school, Fig. 4.8: The house of the Sisi chum or 2 storied traditional house inhabited by the descendents of the Wangsisina Desi and Fig. 4.9: Nunnery above the road with a separate access.



5. CHHUZOM



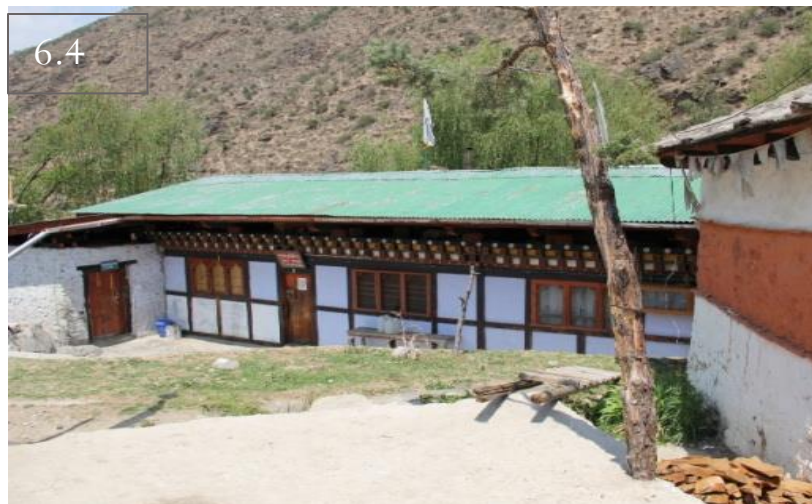
Fig. 5.1: BPC sub station with single storied RCC structures, Fig. 5.2, 5.3: double storied traditional buildings, Fig. 5.4: Chhuzom main gate and Fig. 5.5: Single storied wooden structures.



6.ISUNA, PARO



Fig. 6.1. Isuna village view, Fig. 6.2: traditional house built from stone masonry, Fig. 6.3: traditional 2 storied building, Fig. 6.4: Single storied ekra structure below the road, Fig. 6.5: Single storied structure below the road and Fig. 6.6: Single storied structure.



7. SHABA, PARO.

To-THIMPHU



To- PARO



Fig .7.1:Single storied concrete structure near Shaba School, Fig. 7.2: Double storied CRM structure, Fig.7.3: 3 storied with attic structure at the start of Shaba town, Fig.7.4: Mixture of new and old houses in Shaba town, Fig. 7.5: Old FCB of Shaba town built from stone and wood, Fig. 7.6: Vegetable market shed below the road, Fig. 7.7: Group of traditional houses at the end of Shaba town stretch, Fig. 7.8: View of the Shaba village from the road, Fig. 7.9: Traditional house above the road, Fig. 7.10: 3 storied RCC structure built below the road, Fig. 7.11: Single storied Ekra structure occupied by the staffs of BPC (sub station for the locality), Fig. 7.12: Shaba Army camps (mostly single storied concrete structure), Fig. 7.13: Traditional house with attached stupa on its one side, Fig. 7.14: Hotel Manideepa under construction, Fig. 7.15: Dantak Guest House (single storied RCC structure)

8. BONDEY, PARO.

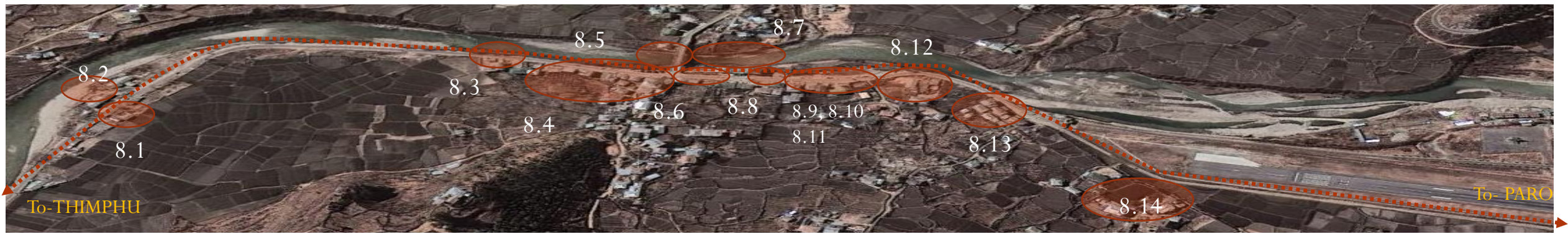


Fig. 8.1: Jordan workshop at the start of Bondey village, Fig. 8.2: Resettled people from airport area living in a ekra style constructed single storied buildings, Fig. 8.3: RCC building at the start of Bondey market stretch, Fig. 8.4: RCC building stretch that makes up the Bondey market (generally 3 storied), Fig. 8.5: Vegetable market below the road, Fig. 8.6: 3 storied RCC building, Fig. 8.7: single storied to 3 storied concrete houses on the other side of the road in the Bondey market area, Fig. 8.8: Temporary shed in use, Fig. 8.9: RCC structure at the end of Bondey market, Fig. 8.10: 2 storied RCC structure, Fig. 8.11: newly built 3 storied RCC structure, Fig. 8.12: Saw mill, Fig. 8.13: Small cluster of traditional house at the junction to the road leading to the airport & Fig. 8.14: Clustered village above the road.

9.CHANGNANGKHA AND CHANG DUNGKHA, PARO.



Fig. 9.1: Chang Dungkha clustered village, Fig. 9.2: 3 storied RCC structure, Fig. 9.3: Resort built with RCC, Fig. 9.4: Hotel Holiday Home (single storied RCC structure), Fig. 9.5: DOR office and staff quarters (single storied ekra structures), Fig. 9.6: single storied concrete house with vertically extended wooden attic and Fig. 9.7: new RCC building under construction at the entrance gate of College of Education, Paro.