



**PHOTOGRAPHIC RECORD OF THE SETTLEMENTS ALONG THIMPHU-WANGDUE PHODRANG HIGHWAY**

(EXTRACT FROM THE COMPLIANCE AND DEVELOPMENT REVIEW OF THE SETTLEMENTS ALONG THIMPHU-WANGDUE HIGHWAY)

(DEPARTMENT OF HUMAN SETTLEMENT, MOWHS)



# 1. YUSIPANG, THIMPHU

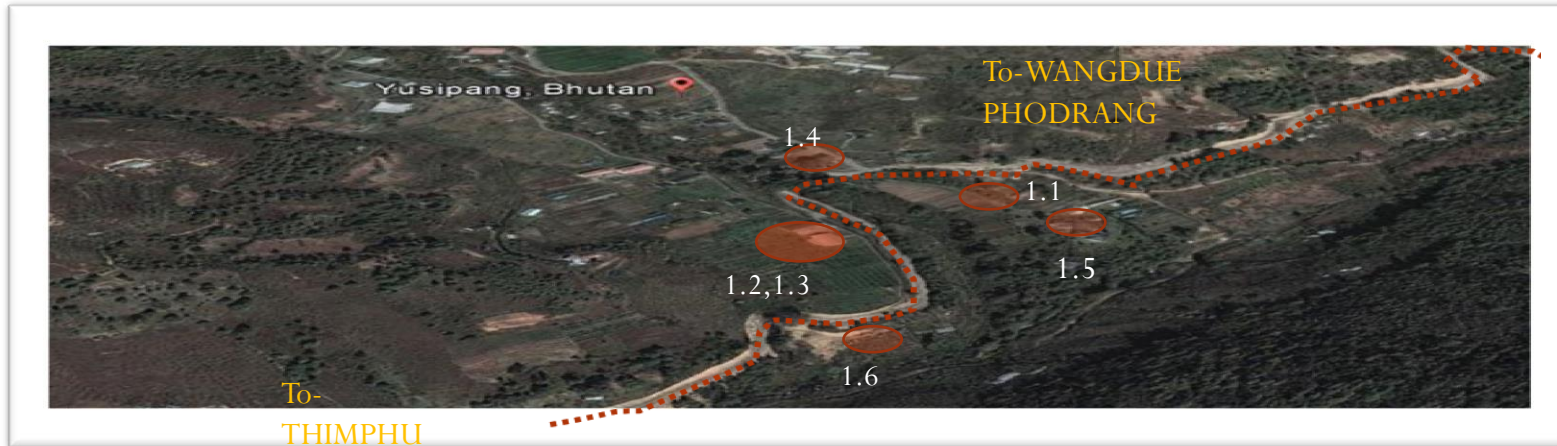


Fig. 1.1: Vegetable market shed,  
Fig 1.2: Horticulture research centre,  
Fig 1.3: Auditorium, Horticulture research centre,  
Fig 1.4 & 1.5: Horticulture research centre staff quarter and old office,  
Fig 1.6: New single storied brick house.

1.1



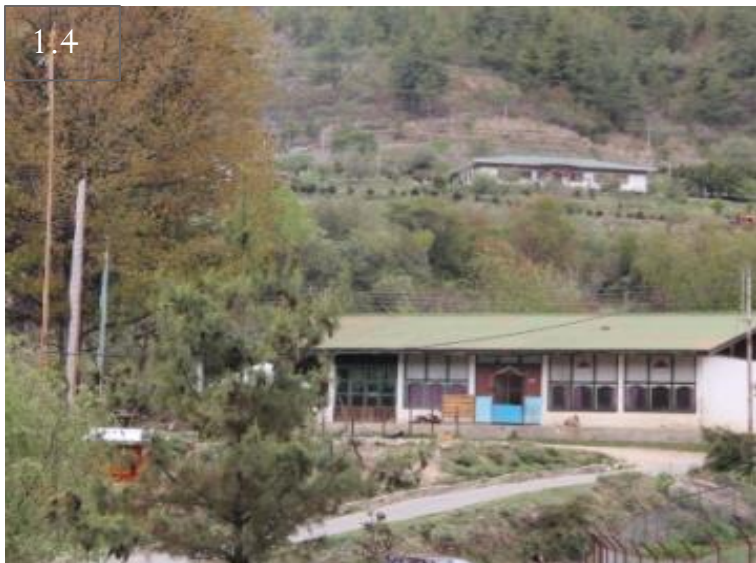
1.2



1.3



1.4



1.5



1.6





TO-WANGDUE PHODRANG

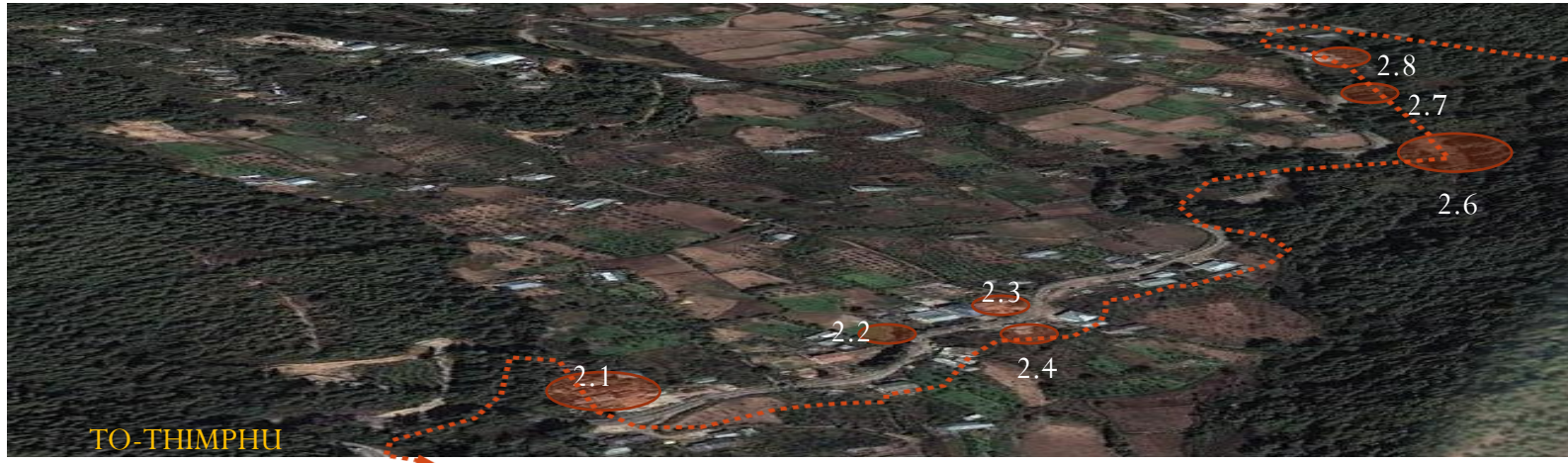


Fig. 2.1: DOR staff quarters, Fig. 2.2: A single storied building under construction, Fig 2.3: traditional house, Fig 2.4: an old single storied wooden house, Fig 2.5: new RCC building, Fig 2.6: cemetery. Fig. 2.7: Vegetable market shed, Fig. 2.8: Stone masonry used in a double storied building.





### 3.DOCHULA, THIMPHU



Fig.3.1: Dchula lhakhang, Fig. 3.2: A Course rubble masonry structure, Fig.3.3:108 stupas at Dochula, Fig. 3.4: DOR quarters below the road, Fig. 3.5: Dochula Hotel.

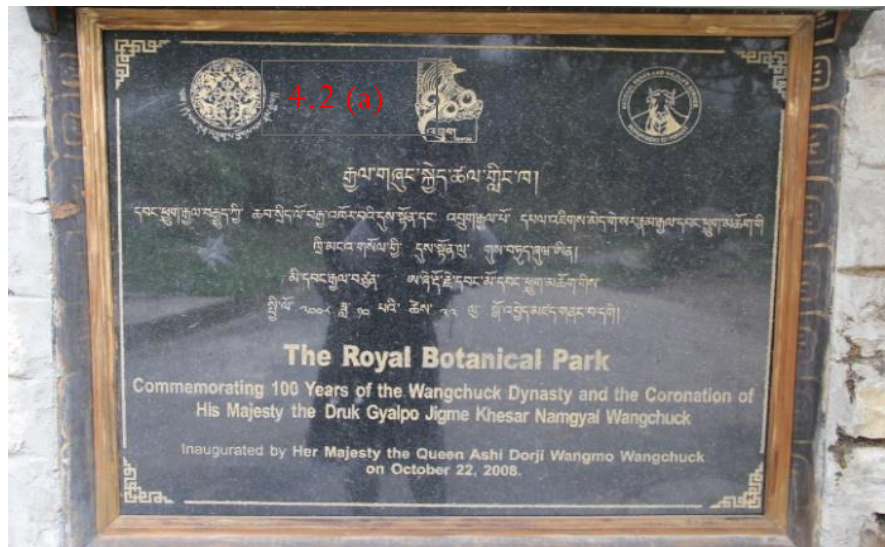




# 4.LAMPERI, THIMPHU



Fig.4.1 and fig 4.2 : Lamperi Royal Botanical Park, Fig. 4.3: DOR quarters.





5.LUMITSAWA, PUNAKHA

TO-THIMPHU

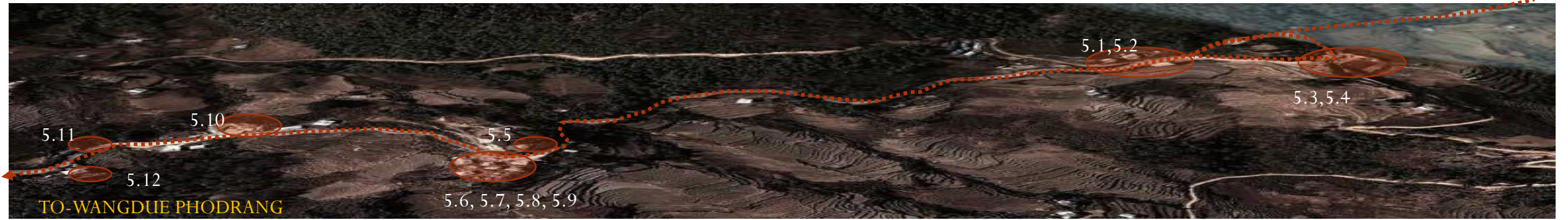


Fig. 5.1,5.2: traditional Bhutanese house at the start of lumitsawa, Fig. 5.3: single storied wooden structure, Fig. 5.4, 5.8. traditional house with RCC extensions, Fig. 5.5: single storied wood and concrete house, Fig. 5.6,5.7: Mud house, Fig. 5.9: stupa not maintained, Fig. 5.10: new construction above the road, Fig. 5.11: single storied bldg. built with ekra walls, Fig. 5.12: new RCC construction .





## 6. THINLEYGANG, PUNAKHA

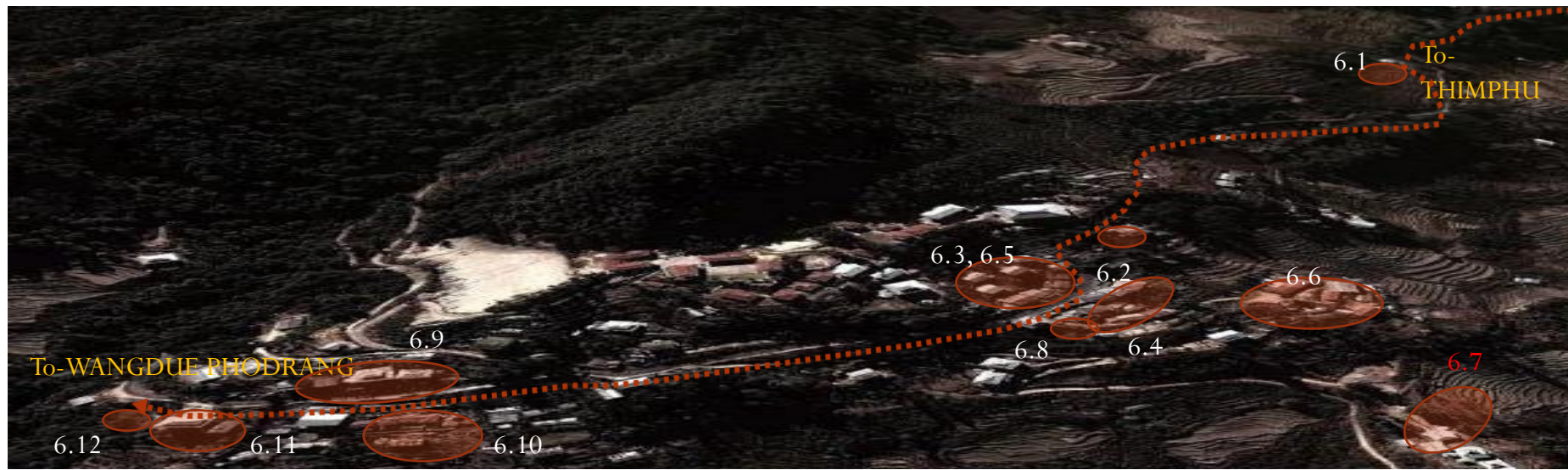
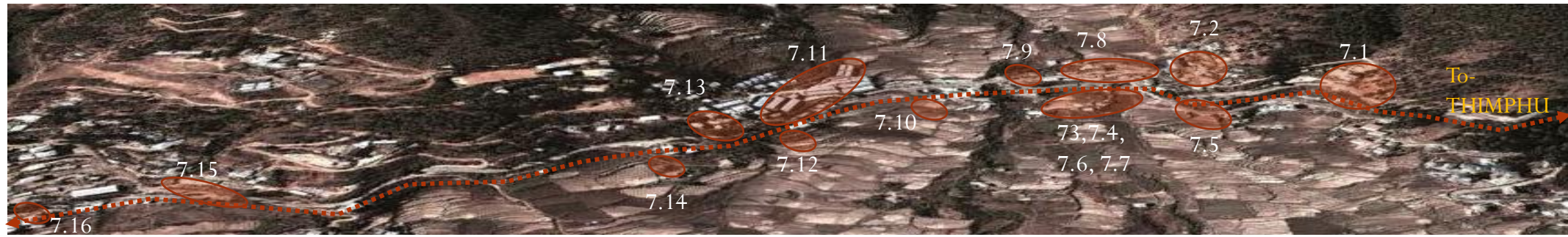


Fig. 6.1. single storied house built from ekra walls, Fig. 6.2: house of the Toepi penlop, Fig. 6.3,6.4: Thinleygang market stretch, Fig. 6.5: traditional buildings above the market stretch, Fig. 6.6: Thinleygang primary school below the road, Fig. 6.7: Thinleygang Lhakhang below the highway, Fig. 6.8: Gup's office, Fig. 6.9: traditional residential houses above the road, Fig. 6.10: single storied RCC structure which houses the BHU, Fig. 6.11: new G+4 +basement RCC structure at the end of the stretch, Fig. 6.12: Site where the solid wastes are disposed.





## 7.MESSINA, PUNAKHA



To-WANGDUE PHODRANG



Fig.7.1: 4 storied RCC building at the entrance of Messina town, Fig. 7.2: new RCC construction in the messina village is the most apparent construction in the vicinity, Fig. 7.3: Missina town, Fig. 7.4: a stupa attached to a house in Messina town, Fig. 7.5: single storied wooden houses in the Messina town, Fig. 7.6: traditional house with workshop attached to it, Fig.7.7: RCC buildings in the Messina town area, Fig. 7.8: vegetable market, Messina town, Fig. 7.9: old mud house , Fig. 7.10: traditional house at the end of Messina town, Fig. 7.11: L & T permanent quarters made of prefabricated steel structure, Fig. 7.12,13,14: new RCC buildings constructed , Fig. 7.15: single storied houses, Fig. 7.16: group of RCC structure which houses the PHPA 1 office.



## 8.SAMPTHOPHANA AND ZAM, WANGDUE PHODRANG

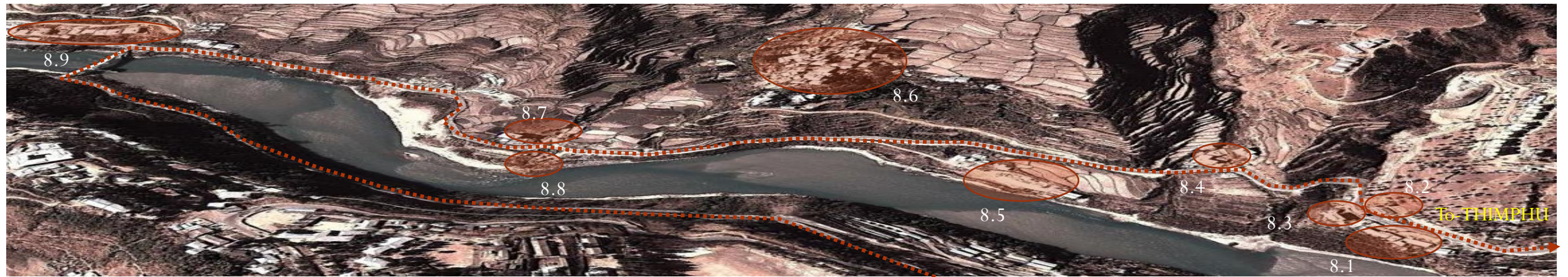


Fig. 8.1: Single storied semi permanent structures below the highway, Fig. 8.2: newly constructed Govt. vegetable produce shop, Fig. 8.3: 2 storied workshop building, Fig. 8.4: CRM structure (gup's residence), Fig. 8.5: temporary concrete brick production house near the river, Fig. 8.6: Rinchengang village in the view, Fig. 8.7: new RCC building amidst the old traditional houses, Fig. 8.8: temporary single storied sheds used as work shop below the road, Fig. 8.9: single storied residential amidst the paddy field and Fig. 8.10: a line of buildings above the bridge .

